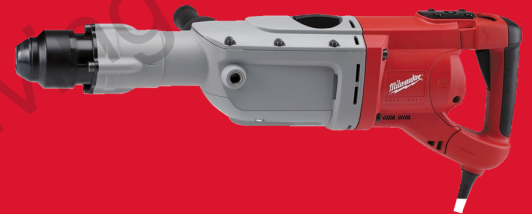




K 900 S 10 KG CLASS BREAKING HAMMER

- 20 J blow energy for hard hitting performance
- 1600 watt motor - best in class with plenty in reserve for the toughest applications
- DIGITRONIC™ - fullwave electronics for precise power adjustment to application
- 3 handles - all with AVS (Anti-Vibration-System) and soft grip for comfortable and less tiring use
- Service indicator light
- Automatic lubrication system for longer life time
- In-Line motor design for more comfort in below waist applications
- Ideal for usage with generators
- Variolock (12 positions) for selecting the most appropriate chisel angle
- 6 m cable



Power input (W)	1600
Full load hammer action (bpm)	975 - 1950
Tool reception	SDS-Max
Vibration chiseling (m/s ²)	11
Weight (kg)	11.0
Supplied in	Kitbox
Article Number	4933375720